

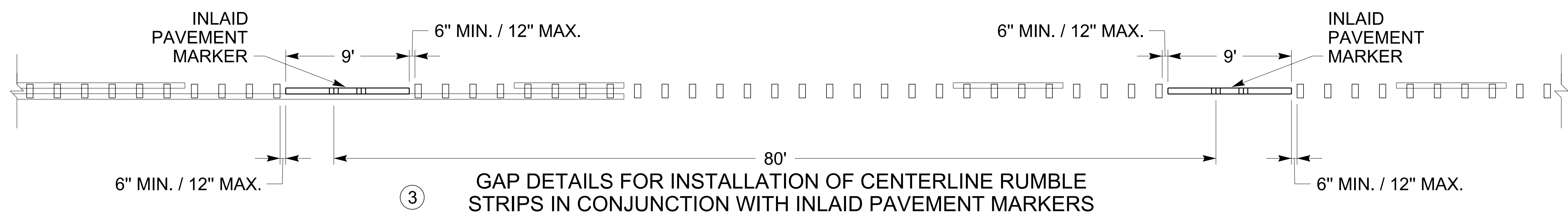
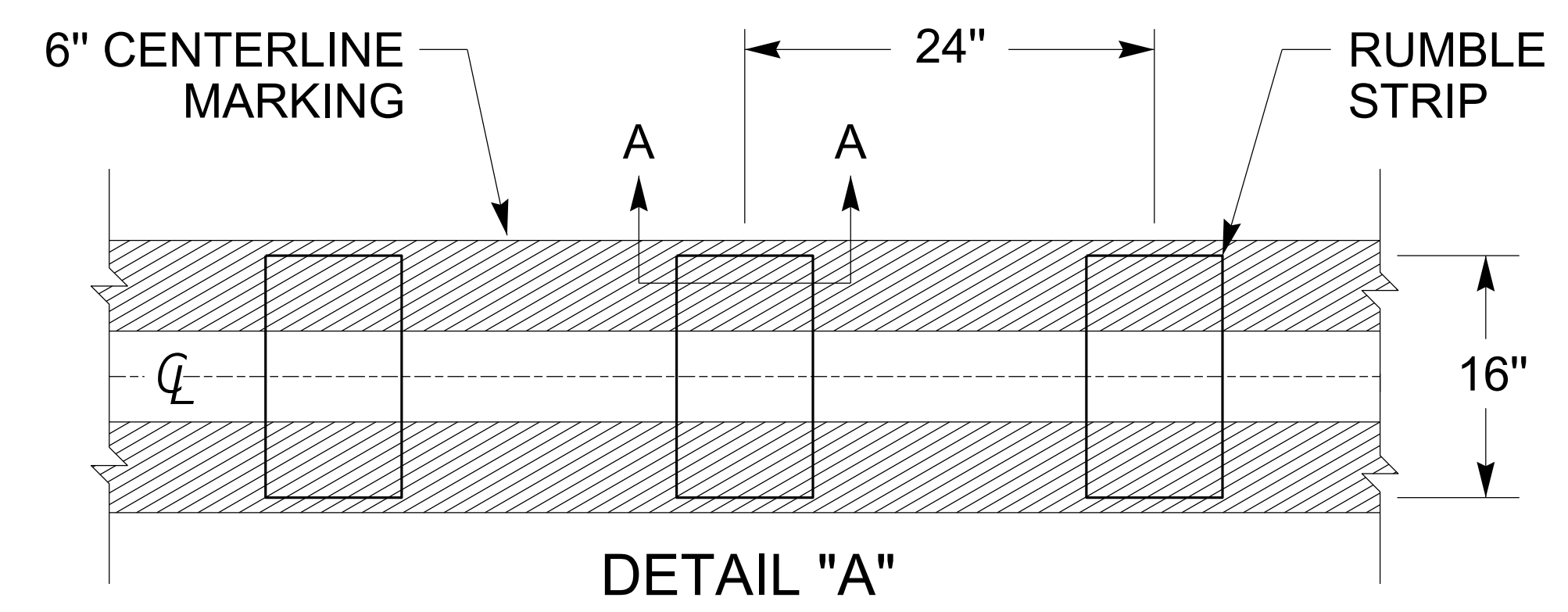
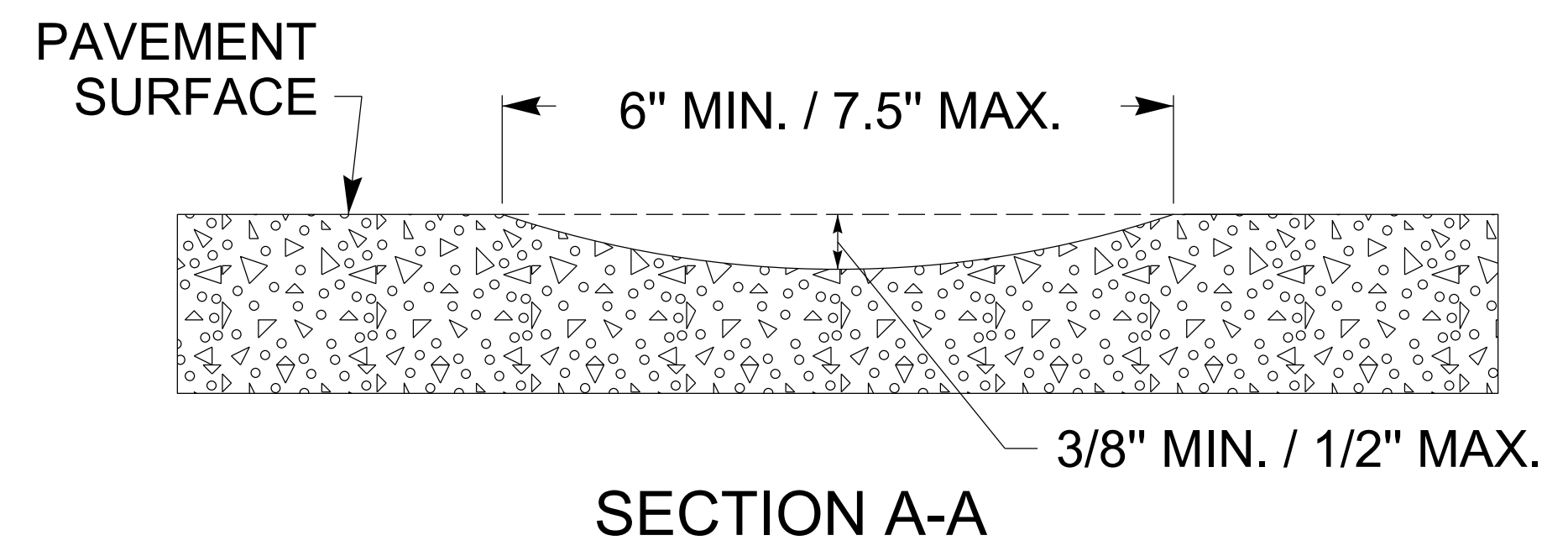
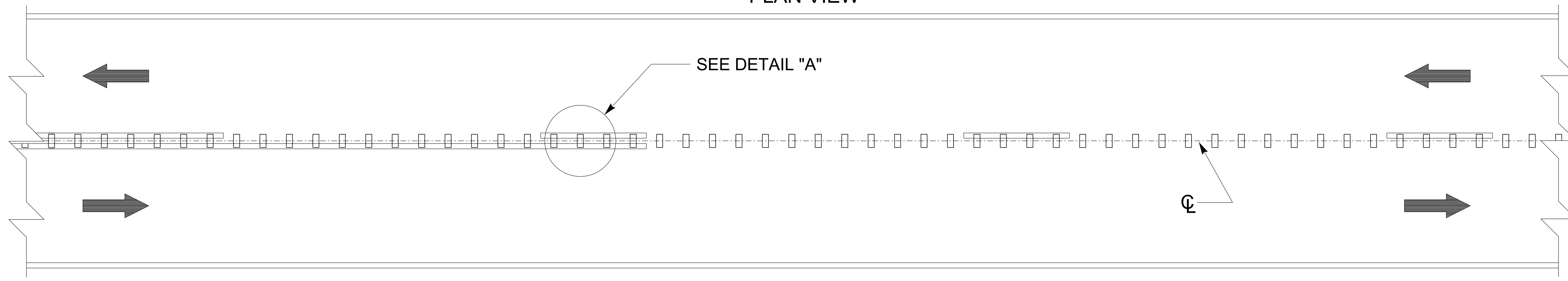
REVISION DATE: 08/11/2025  
REVISION NUMBER: 0

SUBMITTED: *[Signature]* 08-11-2025  
DIVISION DIRECTOR

APPROVED: *[Signature]* 08-11-2025  
STATE HIGHWAY ENGINEER

PERMANENT

PLAN VIEW



~ NOTES ~

1. DISTANCES SHOWN ARE APPROXIMATE. MAINTAIN RUMBLE STRIP DIMENSIONS AND SPACING AS MUCH AS POSSIBLE.
2. CENTERLINE RUMBLE STRIPS SHALL BE INSTALLED IN LINE WITH THE CENTER OF THE ROADWAY AS MUCH AS POSSIBLE.
- ③ FOR ROADWAYS WHERE BOTH INLAID PAVEMENT MARKERS AND CENTERLINE RUMBLE STRIPS ARE TO BE INSTALLED, DISCONTINUE THE CENTERLINE RUMBLE STRIPS 6" MIN. / 12" MAX. BEFORE AND AFTER THE GROOVE FOR EACH INLAID PAVEMENT MARKER. INSTALL AS MANY RUMBLE STRIPS AS POSSIBLE BETWEEN ADJACENT PAVEMENT MARKERS WHILE MAINTAINING THE 24" CYCLE.
4. DO NOT INSTALL CENTERLINE RUMBLE STRIPS IN AREAS INDICATED ON TPR-100.
5. CENTERLINE RUMBLE STRIPS SHOULD BE OMITTED WHERE THE POSTED SPEED LIMIT IS 45 MPH OR LESS, OR WHERE LANE WIDTHS ARE LESS THAN 11 FT.

DRAWING NOT TO SCALE  
USE WITH CUR. STD. DWGS.  
TPR-100, TPR-120, AND  
TPR-125

BID ITEM AND UNIT TO BID  
CENTERLINE RUMBLE STRIPS

LF



COMMONWEALTH OF KENTUCKY  
DEPARTMENT OF HIGHWAYS

CENTERLINE RUMBLE STRIPS 6 INCH SPACING

STANDARD DRAWING NUMBER  
TPR-110-01